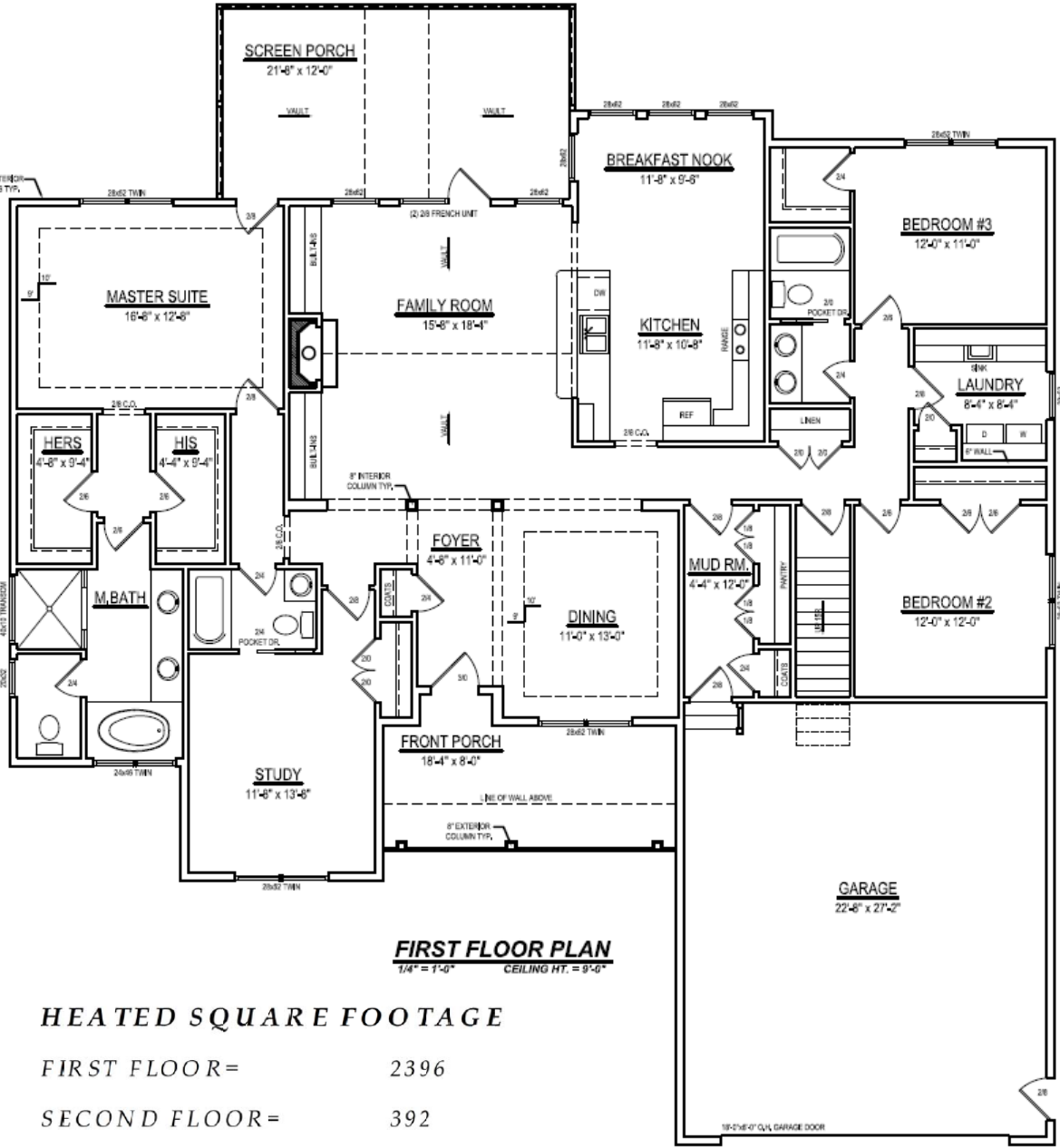
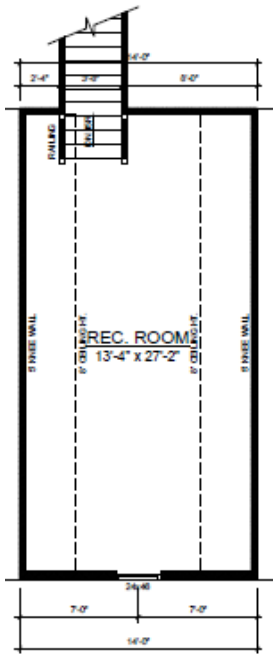


# The Rico



**FIRST FLOOR PLAN**  
 1/4" = 1'-0"      CEILING HT. = 9'-0"



**SECOND FLOOR PLAN**  
 1/8" = 1'-0"      CEILING HT. = 8'-0"

## HEATED SQUARE FOOTAGE

FIRST FLOOR =	2396
SECOND FLOOR =	392
THIRD FLOOR =	N/A
BASEMENT =	N/A

**TOTAL HEATED = 2788**